

# TRACE32®



## Product Overview

# Product Portfolio



Lauterbach is the world's leading manufacturer of complete, modular microprocessor development tools with 35 years' experience in the field of embedded designs and has supported debugging and tracing of multicore chips for more than 10 years. It provides integrated debug environment for embedded designs with its TRACE32 tools which consist of:

- PowerView as universal GUI
- PowerDebug tools for debugging
- PowerTrace tools for program/data flow trace
- PowerIntegrator tools for logic analyzing
- Software-only tools for debugging and tracing

## Introduction

Lauterbach TRACE32 tools support over 80 of the most common microprocessor architectures in use in the embedded market. The tools are designed around common modules which are universal and architecture independent. The tools play a very important role in the development of embedded systems and are used in the following ways:

### **Debug**

Most modern cores for the embedded market have a debug port, and the tools can be connected to this to control the core, access the data being processed by the core and then debug by single stepping, breaking, tracking values of variables and reading registers and memory. This means developers can diagnose software failures and memory corruption issues and correct the system to make it perform as expected.

### **Debug and Trace**

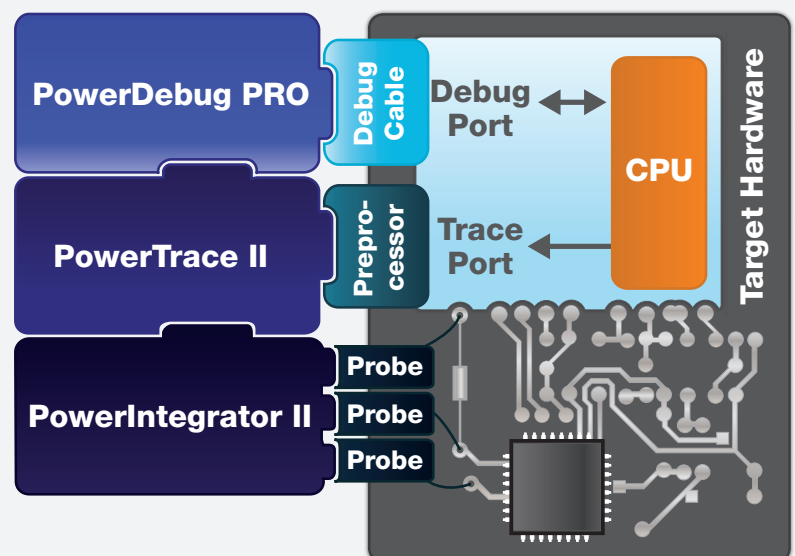
In many applications it is no longer enough to run a simple test on your code. In markets such as automotive, medical, aerospace and defence, it is increasingly necessary to prove how the code behaved under all possible conditions. This requires the tools to record the program flow information from the core via the target cores' integrated trace port. Both long-term and high-speed trace options are supported.

### **Debug, Trace and Logic Analyzer**

In addition a logic analyzer can be integrated to provide signal trace for logic analysis and protocol analysis as well as correlating power usage to the code operation.

### **Debug and Trace with Software-only Tools**

Development is increasingly being undertaken in virtual targets, RTL simulators and emulators. As the technology and market leader of microprocessor development tools Lauterbach is active in this development area, i.e. TRACE32 as Front End allows debugging and tracing of virtual prototypes as well as accessing emulation models via a separate Back End interface. Furthermore Lauterbach is ready to support debugging solutions for native connections between host and target.



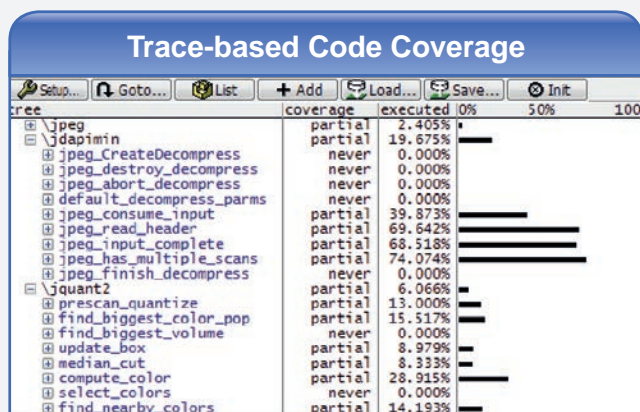
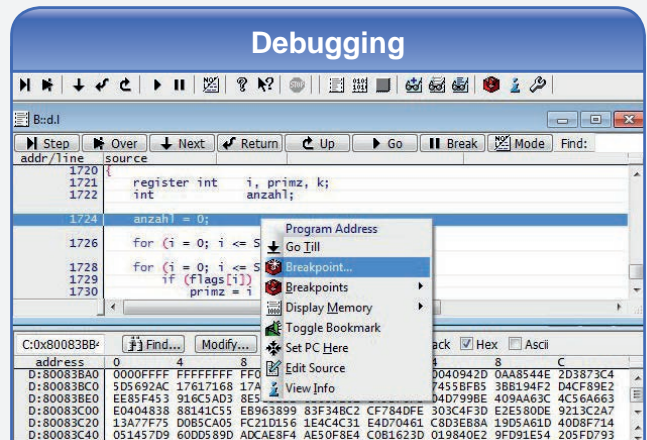
TRACE32 tools are able to provide a complete debug environment with all standard functionalities, as well as some more advanced features.

Listed below are the major functionalities provided by TRACE32 hardware tools.

## Debug

A system normally consists of a standard interface module and an architecture-specific debug cable providing standard debug features such as:

- JTAG, cJTAG, SWD and other debug interfaces
- Run control (program-/data-breakpoints, single stepping, real-time trigger)
- FLASH programming
- Multicore/multiprocessing debugging
- OS-support with task analysis, UEFI
- HLL debugging (C, C++)



## Debug and Trace

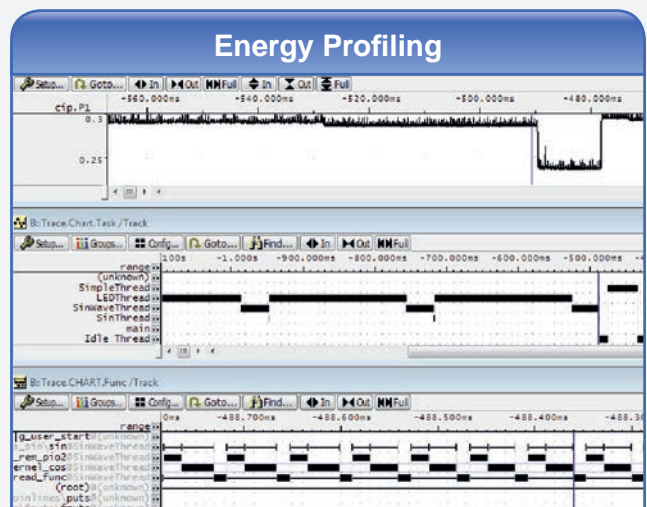
A trace system is composed of standard debug/trace modules and architecture-specific debug cables/trace probes (called preprocessors), which connect the base modules to the targets. Besides debug features it provides additionally:

- Serial and parallel off-chip trace (ETM, Nexus, etc.)
- Non-intrusive flow trace
- Time-correlated multicore trace
- Run-time analysis and statistics
- Long-time trace (streaming)
- Code coverage

## Debug, Trace and Logic Analyzer

This is composed of the tools in debug and trace and in addition a logic analyzer module with architecture-specific probes for connection to the target. The extra features provided are:

- Logic analyzer
- Protocol analyzer (USB, CAN, I2C, etc.)
- Energy profiling
- Time correlation with trace tools



## Product Characteristic

Based on Lauterbach's modular concept the hardware tools are composed of two parts: standard base modules and architecture-specific cables/probes. All base modules are completely universal and architecture-independent. The architecture-specific cables/probes connect the base modules and targets which enables the migration to new processor architecture through easily changing the cable/probe.

## PowerView - The Universal GUI

PowerView provides an integrated debug environment and a universal interface for the entire tool family. Menus, toolbars and dialog boxes offer intuitive and fast access to all debug, trace and logic analyzer features. It guarantees a consistent control for all tools and a coherent display of all software and hardware information required for debugging, tracing and further analysis. As a flexible user interface PowerView allows the developers to configure the environment to meet their specific needs. For example:

- Free selection of host interface and host OS
- Free selection of programming language and compiler
- Free selection of the OS on the target
- Free selection of the CASE tools

## Debug Hardware Tools

As debug information is provided by the on-chip debug interface, it becomes possible to test and analyze every aspect of the target operation including the bootstrap code, the target initialization, the interrupts, the drivers and the kernel itself. For OS types which dynamically load processes, a special detection mechanism is provided that catches the processor exactly on the entry point. This allows the developer to debug each process right from the start.

The debugger is available for all the common processors or SoCs on the embedded market. Since Lauterbach is the only provider of tools for many cores, e.g. standard controller, DSPs, FPGA softcores and configurable cores, everything can be combined into a multicore chip and debugged with a TRACE32 debug tool.

### Our range of products:

#### **PowerDebug USB 3**

- USB 3.0 host interface

#### **PowerDebug PRO**

- USB 3.0 and Gbit Ethernet host interface





## Debug and Trace Hardware Tools

Real-time trace supplies fast and systematic troubleshooting capabilities to detect complex errors that only occur under run-time conditions. In addition the recorded time-stamped program/data flow allows an overall analysis of the system performance as well as quality assurance features such as code coverage and cache analysis.

Over the last decades, Lauterbach has achieved world leading expertise for trace port protocols such as the Embedded Trace Macrocell™ (ETM) for the ARM® architecture and Nexus for the Power Architecture™. Fast trace evaluation and analysis are guaranteed through advanced compression technologies and speed-optimized system software. With up to 4GB trace memory and the possibility of streaming to the host computer, a large amount of program and data flow information can be traced.

The preprocessor/Nexus adapter connects the real-time trace module to the standard trace port connector as defined by the silicon manufacturer. Lauterbach has developed custom hardware to meet the special needs of the different technologies. E.g. the preprocessor with AutoFocus II contains a self-calibrating hardware to ensure signal integrity. HSSTP (High-Speed Serial Trace Port) Preprocessor guarantees up to 6.25 Gbit/s data rate between base module and target.

### Our range of products:

#### **PowerTrace PX and PowerDebug PRO**

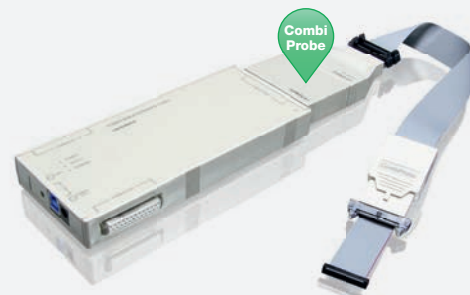
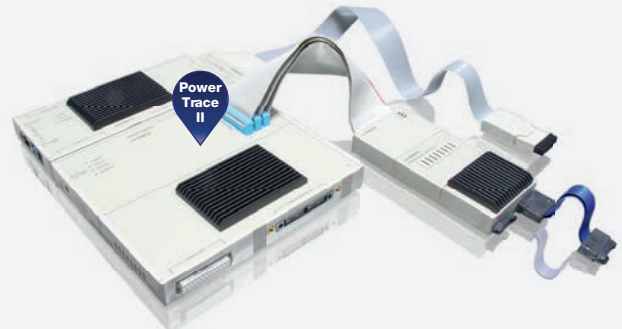
- 512 MB trace memory
- Support for parallel trace ports up to 7.4 Gbit/s, 32 channels up to 600MHz sample rate each
- Support for serial trace for AURIX™ and MPC57xx

#### **PowerTrace II and PowerDebug PRO**

- 1 GB / 2 GB / 4 GB trace memory
- 17 logic analyzer channels
- Support for parallel trace ports up to 19.2 Gbit/s, 16 channels up to 450MHz sample rate each
- Support for serial trace ports up to 4 lanes, each lane max. 6.25 Gbit/s

#### **CombiProbe and PowerDebug USB 3 or PowerDebug PRO**

- For small trace ports up to 4 bit
- For low bandwidth up to 200 Mbit/s per channel
- Suitable for system trace
- 128 MB trace memory



## Add-on Hardware Logic Analyzer

The logic analyzer is designed as an integral part of the debug environment and fulfills the task of recording bus protocols, communication interfaces, interrupts and ports in order to analyze their timing. For instance the time relation between the program/data flow information sampled by the real-time trace and signals recorded by the logic analyzer can be viewed through the common IDE PowerView.

The PowerView provides ready-to-run software interfaces:

- To translate bus protocols into a program and data flow trace by using the common symbol database of the debugger.
- To perform various protocol analyses based on the raw data recorded for a communication interface.

The logic analyzer supports timing, state and transient recording. Simple and complex filters allow an optimized utilization of the trace memory. To analyze complex timing correlation, trigger conditions can be programmed to stop either the logic analyzer recording or the program execution at the precise point of interest.

### Our range of products:

#### **PowerProbe**

- Medium speed clock rate (up to 200MHz)
- 62 channels and 256K transient records
- Timing analyzer, pattern generator and pulse generator

#### **PowerIntegrator**

- Up to 500MHz sampling rate (DDR)
- 204 channels and 512K transient records

#### **PowerIntegrator II**

- Up to 500 MHz sampling rate (DDR)
- 102 channels and 64M / 128M / 256M transient records



## μTrace® - Debug and Trace for ARM® Cortex®-M

A new all-in-one debug and trace solution called μTrace has been developed in response to the breakthrough of Cortex®-M processors into the embedded market and targets the Cortex®-M family specifically.

#### **Characteristics**

- USB 3.0 interface to host computer
- 256 MByte trace memory

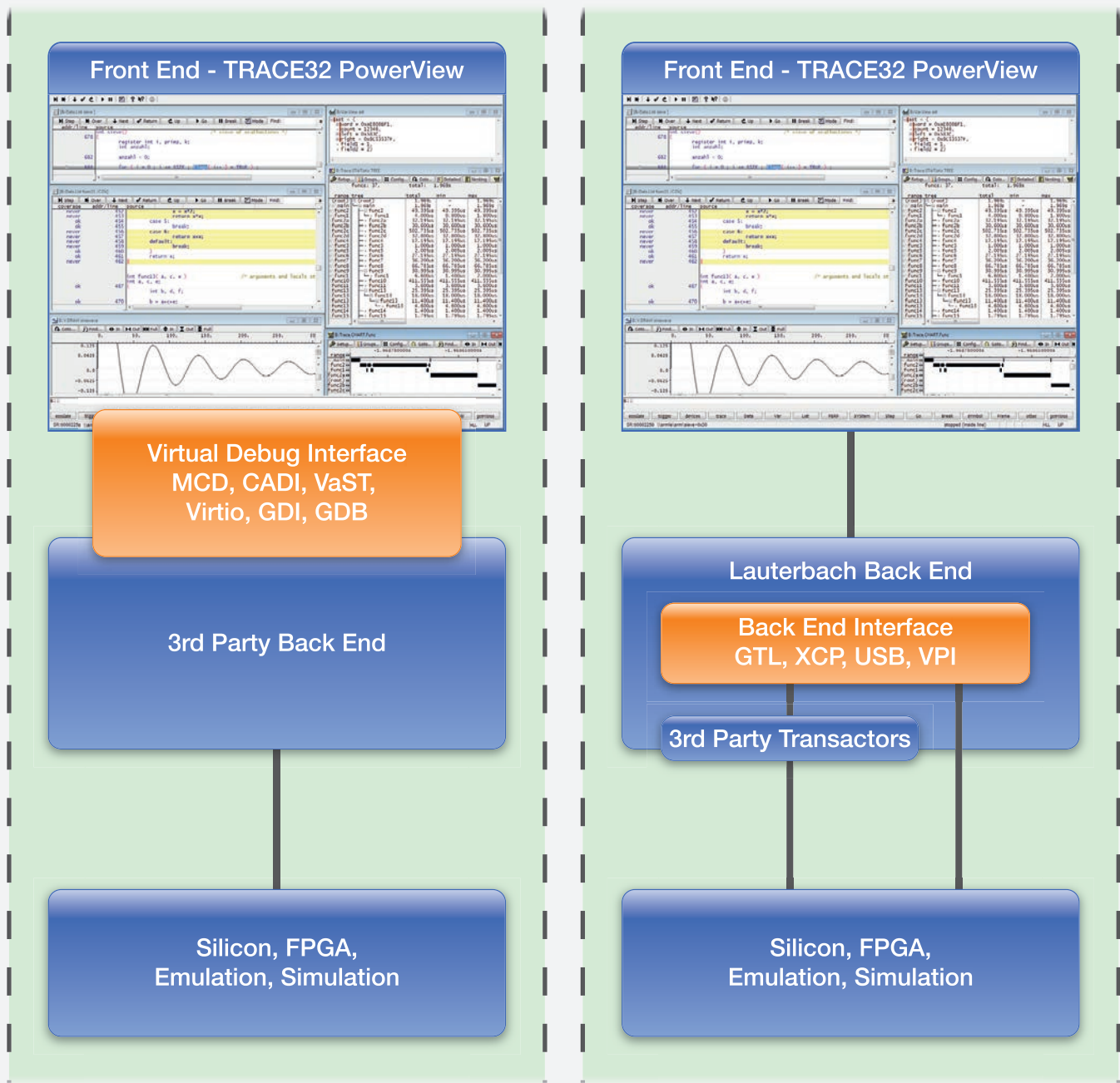


## Software-only Tools

Systems are getting more complex with more cores, peripherals, GPU and DSP integration and complex memory hierarchy. Tackling this complexity with system level validation from the early stages of product development on virtual prototypes, RTL simulators and emulators help the engineers to avoid potential problems that might otherwise surface after tape-out.

Therefore debugging of virtual prototypes is becoming an important feature. Lauterbach has been working closely with semiconductor design companies and leading EDA partners to provide debugging and trace solutions for pre-silicon hardware and software development and validation.

TRACE32 controls the virtual prototype via the universal GUI PowerView as Front End and accesses the simulator and emulator models via a separate Back End interface. The experience and knowledge originating from developing hardware debugging tools has flowed into the development of software-only tools, which ensures the development efficiency and endows the products with high quality, reliability and universality, e.g. the scripts generated for the virtual targets can be reused later on for the real targets.



# TRACE32<sup>®</sup> Support for all project phases



## Lauterbach GmbH

Altlaufstraße 40 • 85635 Höhenkirchen • Tel: +49 8102 9876 0 • [sales@lauterbach.com](mailto:sales@lauterbach.com)

Visit our official Youtube channel and discover our new tutorials: <http://www.youtube.com/user/lauterbachgmbh>